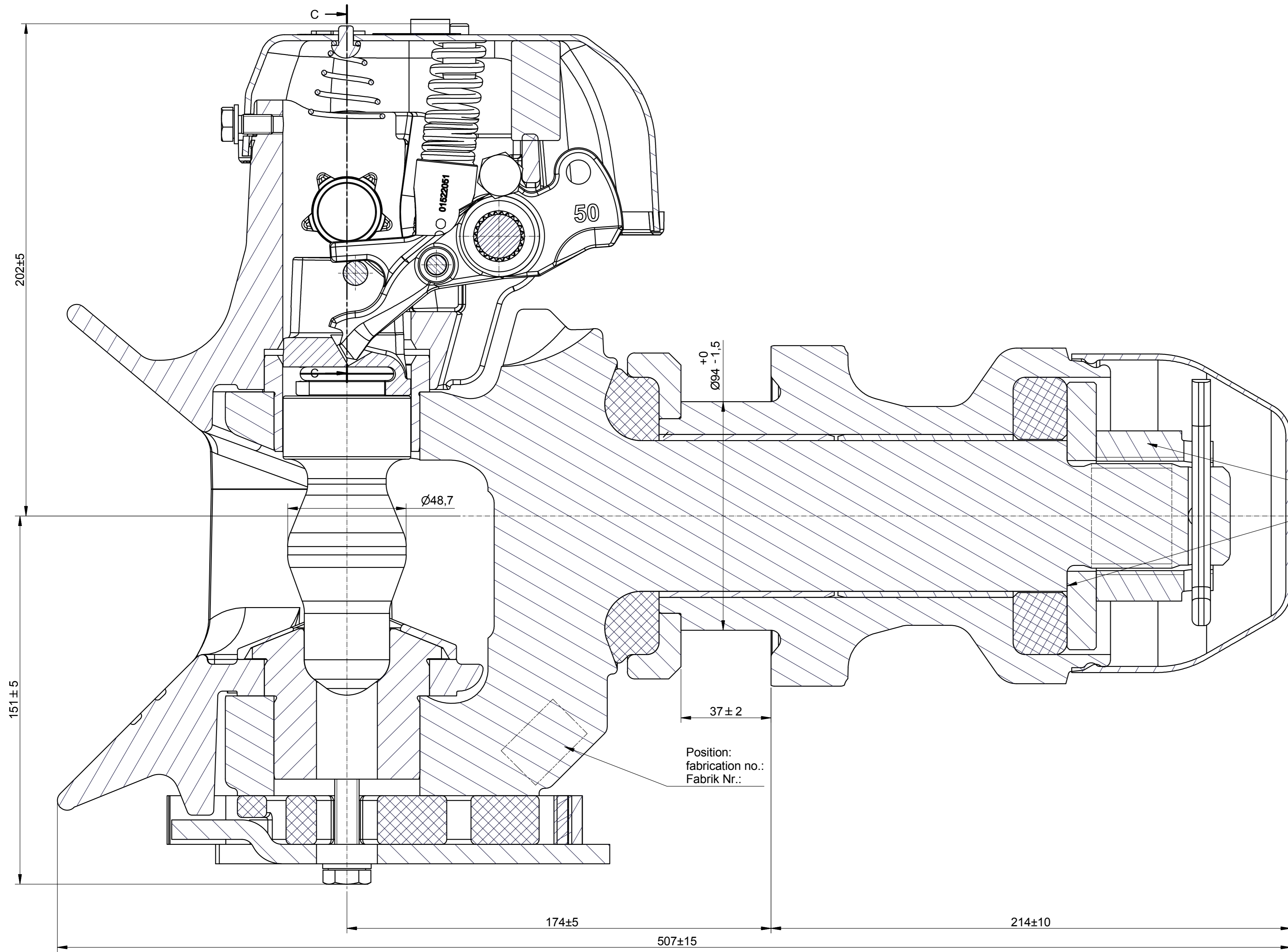


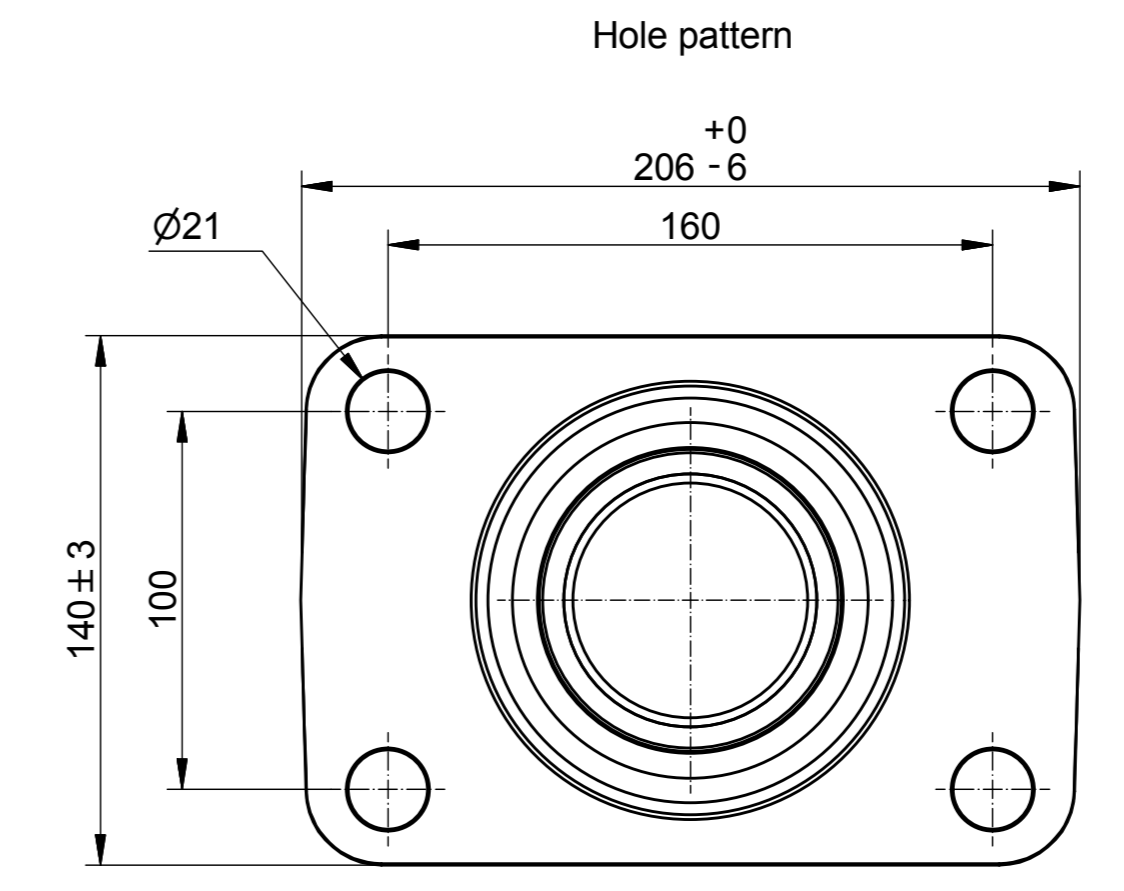
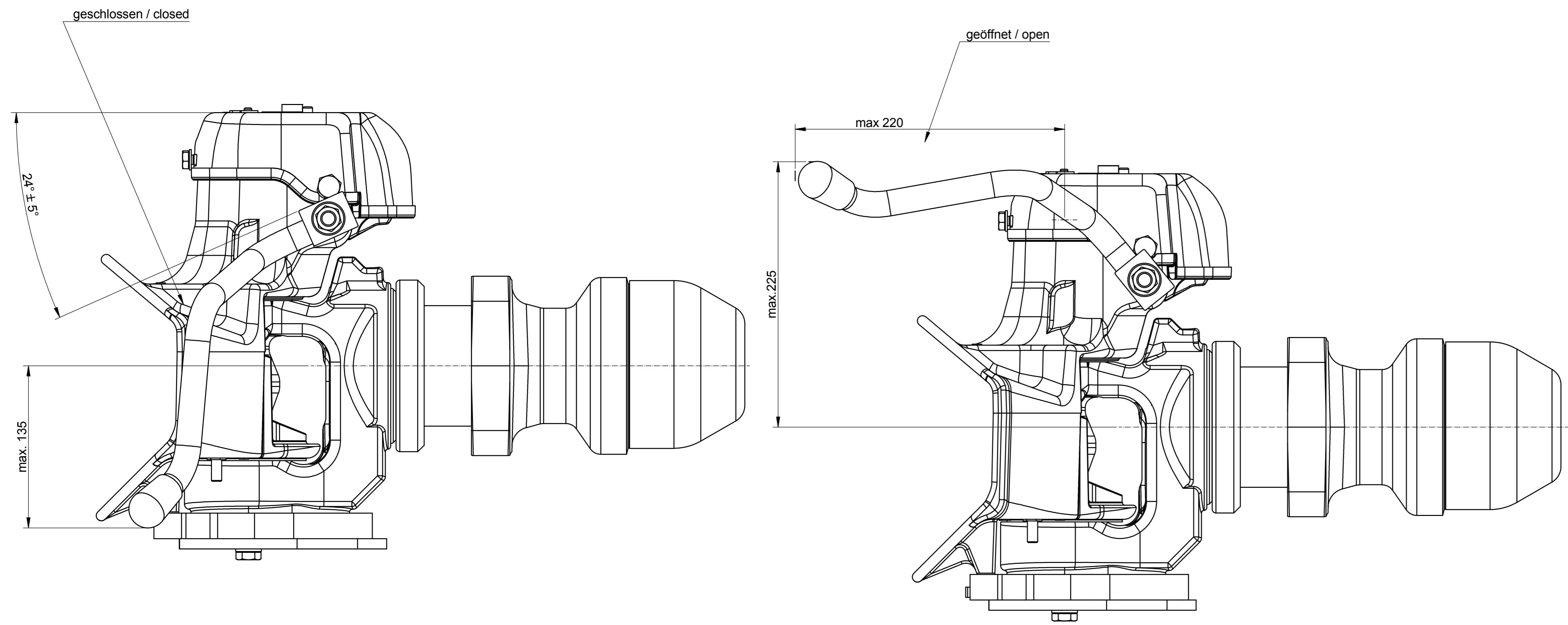
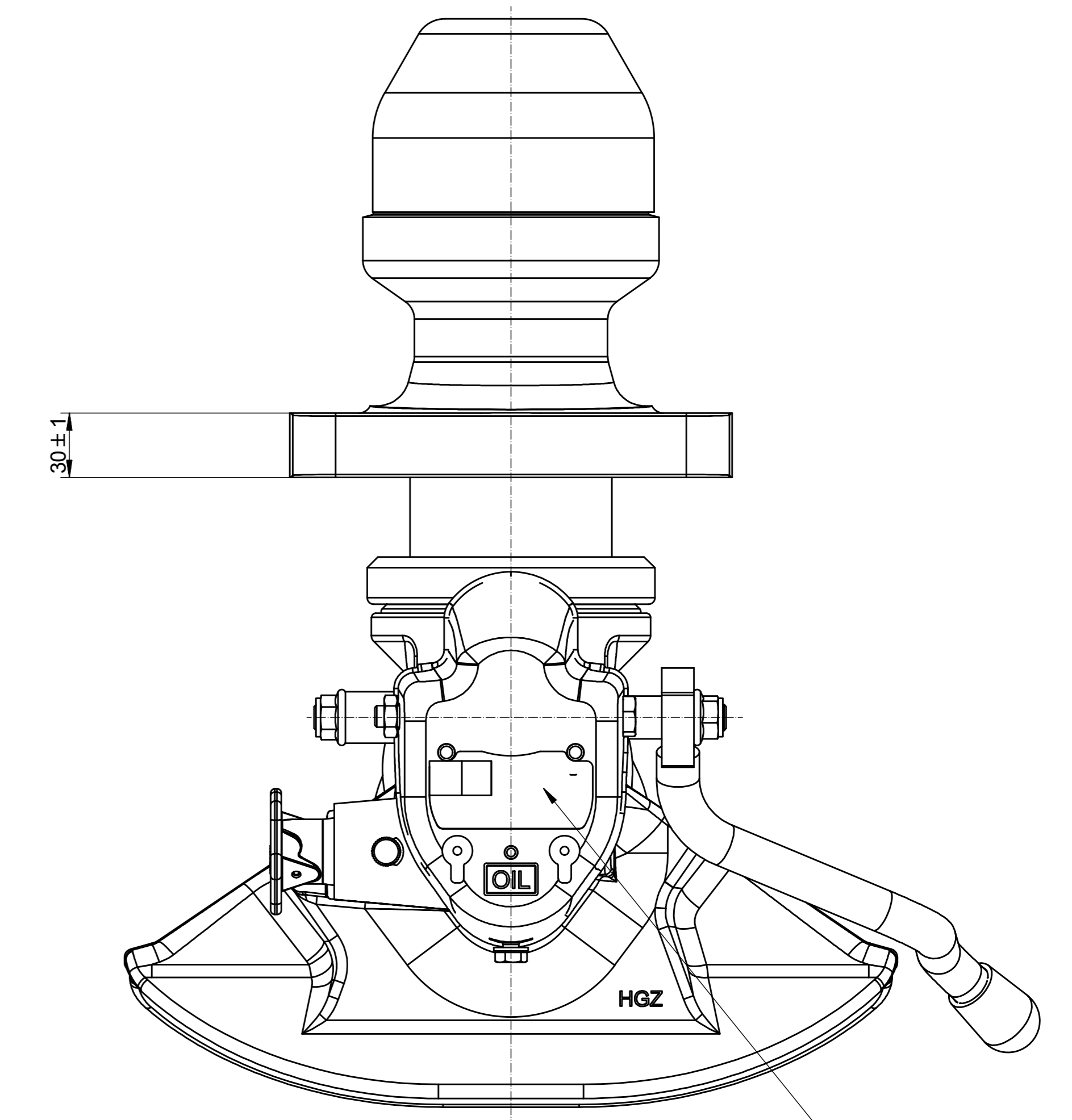
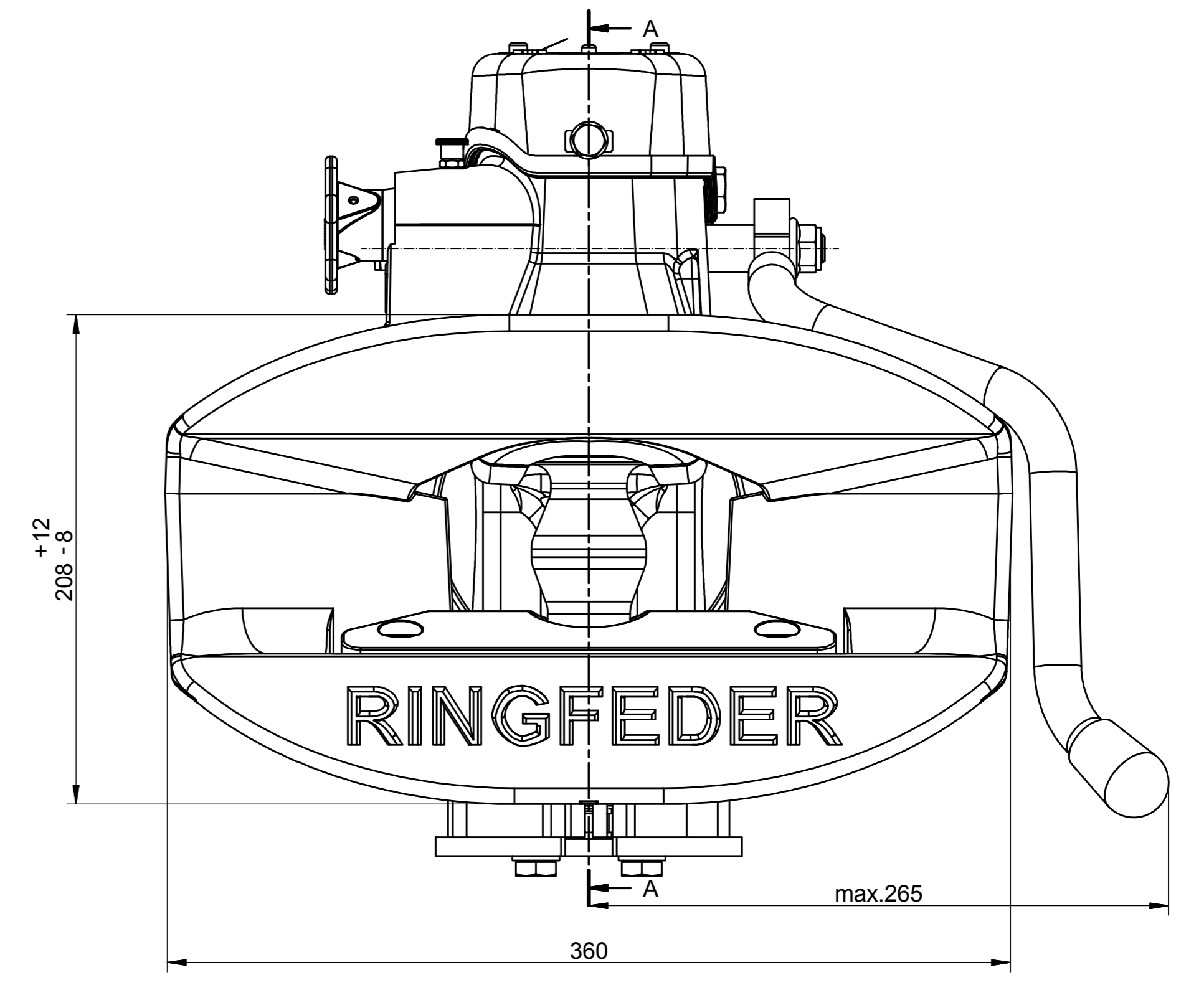
AA (1:1)

C-C (1:1)



minimum tightening torque for
castle nut M45x3: 700 Nm

Attention!
Note that the washer bottoms out to the drawbar!
Read the mounting instruction before assembling.



RINGFEDER VBG GROUP AB, Sweden
Automatic drawbar coupling Type 303 AUS
for connection drawbar eyes D50, DIN 74053 or ISO 1102.
ADR82 compliance by ECE approval
Serial No. C50-X
Year **E11** 55R - 0110486

D 320 kN
Dc 135 kN – S 1000kg / V 75kN – S 2000kg / V 63kN
Dc 170 kN – S 1000kg / V 60kN

Angles of drawbar eyes D50: horizontal: ±110°
vertical: ±20°
axial: ±360° (minimum torque of 100 Nm)

RINGFEDER		Approved Date	Model No.	Part Number	Stock
VBG GROUP		25.11.2014	HBH	12136	a
Manufactured surface	Quality	Production No.	Production Date	Production Place	Approval
15990007		MH	HBH		
Unmachined surface	Type	Revision	Approval Date	Approval Place	Approval
Surface texture	Mark		05.11.2009	HBH	
50	EC/ED/KETL 18-25µm	Revision Name			
type 303 AUS		Automatic trailer coupling selbsttätige Anhängerkupplung type 303 AUS			
P 15990007-info		Date for drawing			